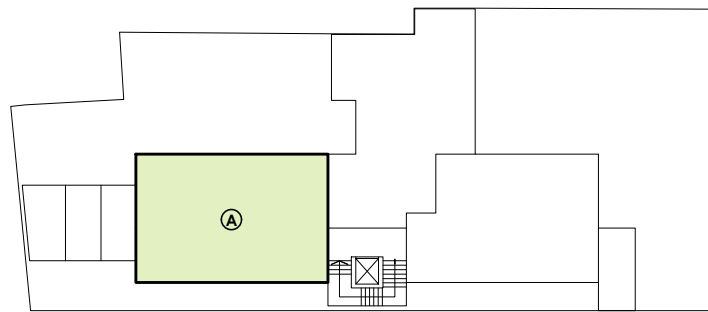
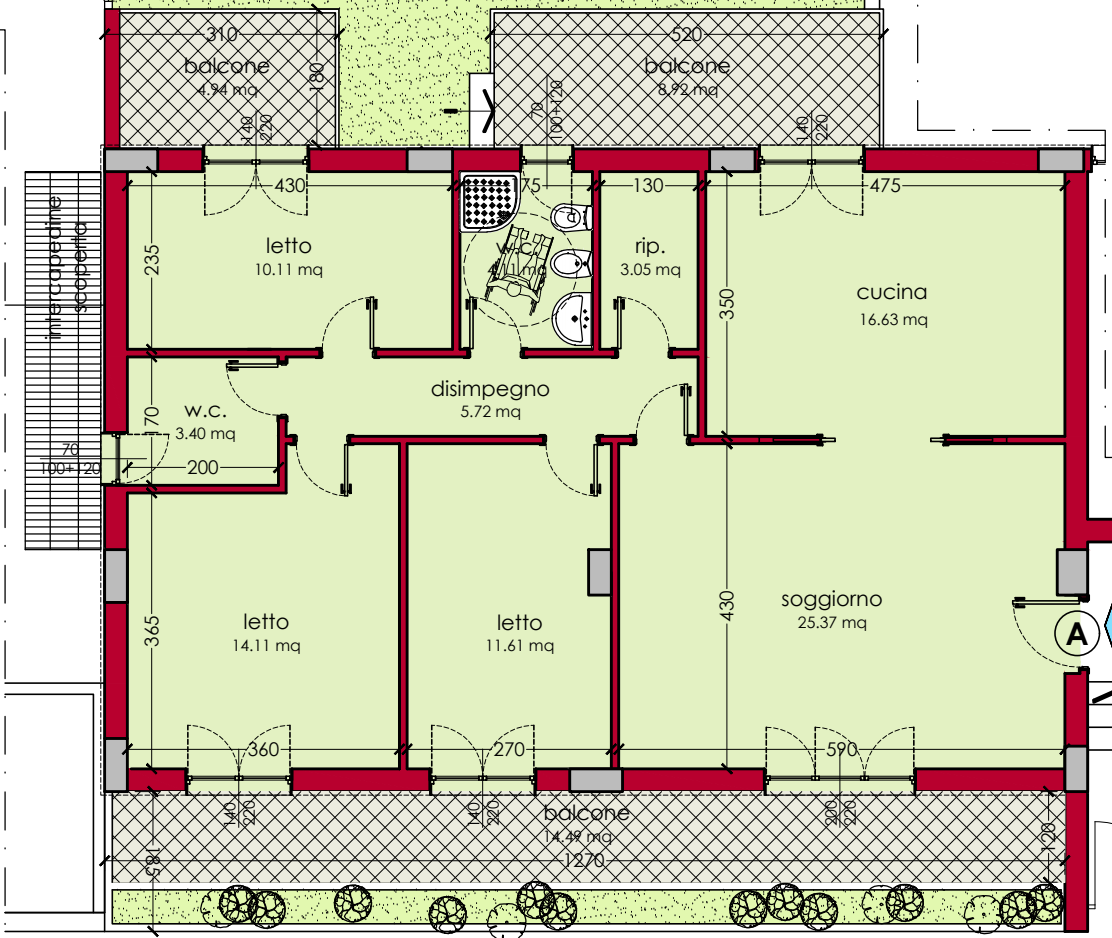
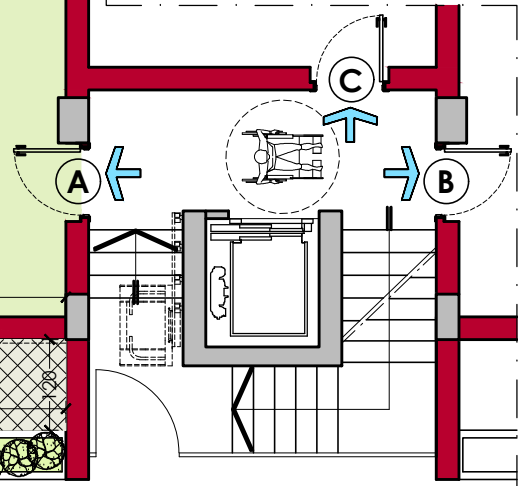


area di manovra



appartamento tipo A piano rialzato

- sup. commerciale abitazione = 115,37 mq
 - sup. commerciale balconi = 37,80 mq
 - sup. commerciale giardino = 55,78 mq
 - sup. commerciale area di manovra = 10,00 mq
- SUPERFICIE COMMERCIALE TOTALE = 135,50 mq**



-0.20

Via Imbriani